



TOBACCO DOCK VENUE LTD

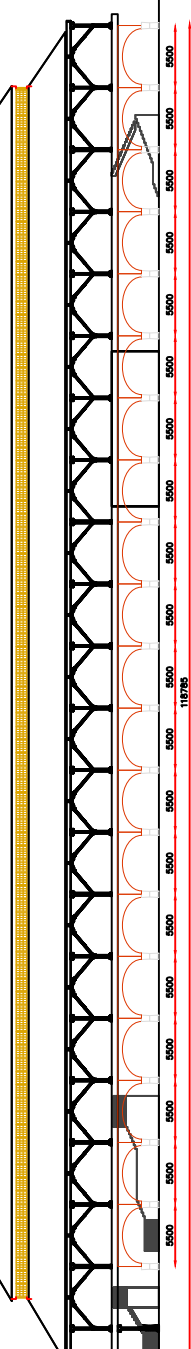
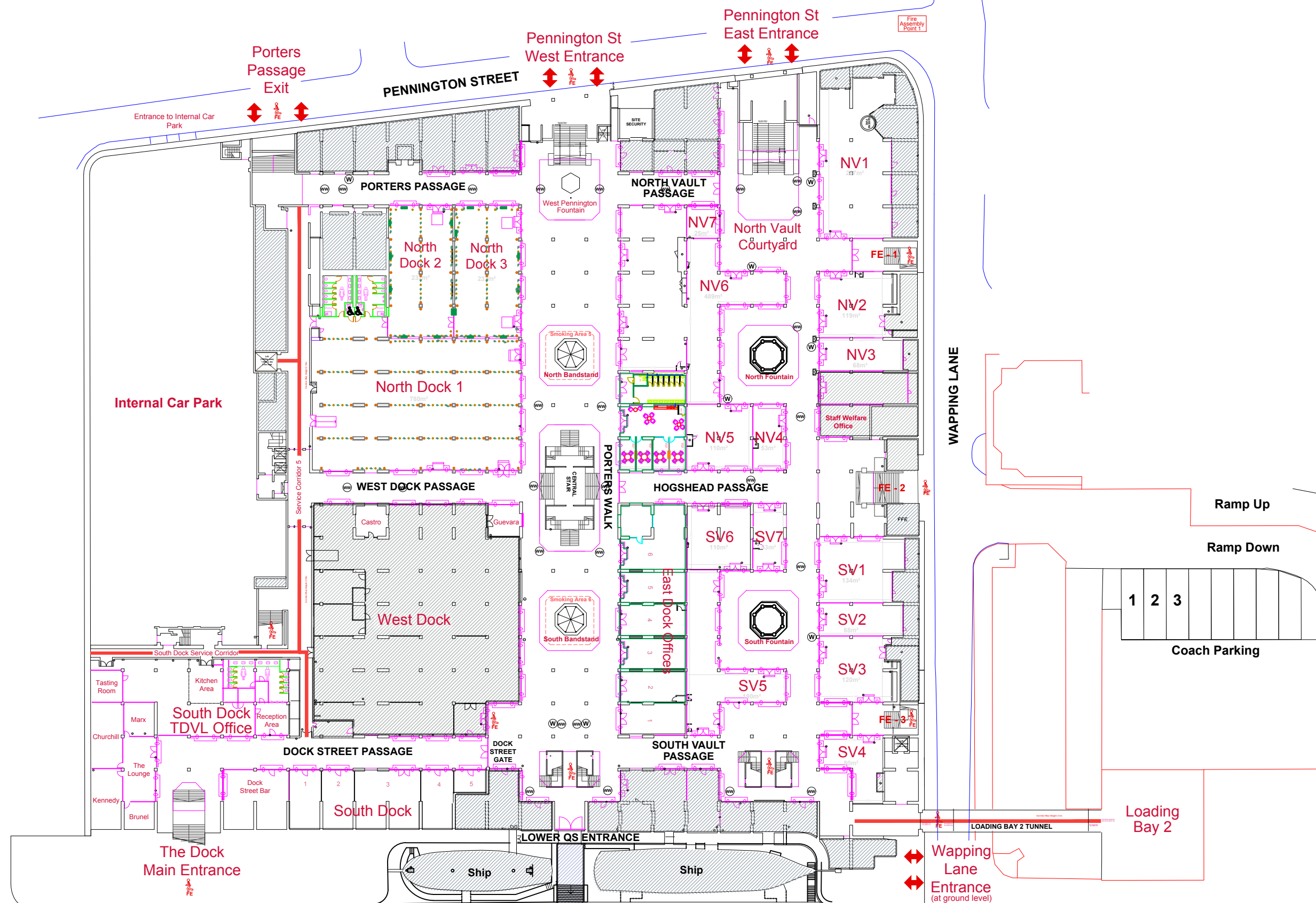
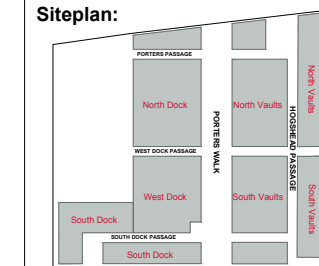
The Dock
Tobacco Quay
Wapping Lane
London
E1W 2SF

T: +44 (0) 207 680 4001
www.tobaccodocklondon.com

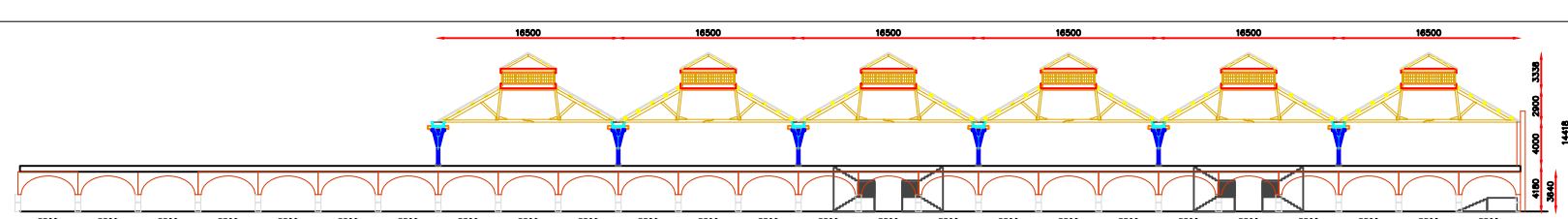
Project: TOBACCO DOCK

Subject: VAULTS FLOOR PLAN

Siteplan:



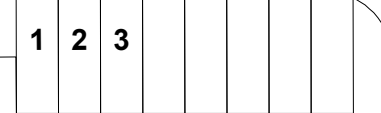
Side Elevations



WAPPING LANE

Ramp Up

Ramp Down



Coach Parking

Loading Bay 2

LOADING BAY 2 TUNNEL

Wapping Lane Entrance (at ground level)

Up to 'Fire Assembly Point 3'

Legend

- Area not in use
- Fire Escape
- Service Corridor
- Electrical unit
- Fire Call Point
- Fire Hose
- Drain Pipe
- Water Point
- Waste Point
- EMT Heater

SCALE
0 1 2 3 4 5 10 20

date 26 - 09 - 2016

This drawing remains the property of Tobacco Dock Venue Ltd. and shall not be shown to any third party unless permission has been obtained in the form of written consent from the owner. IF IN DOUBT, ASK